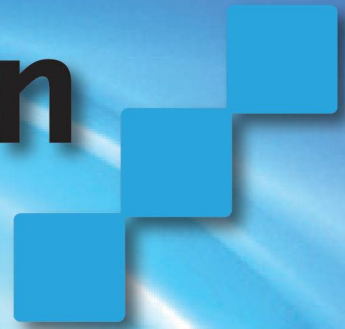


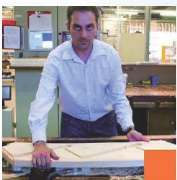
New Dimension



Staircase-Software Programs

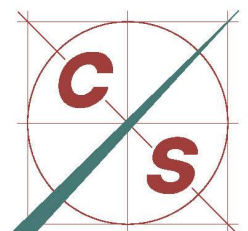
Folded plate staircase

Software module for designing and
manufacturing folded plate staircases

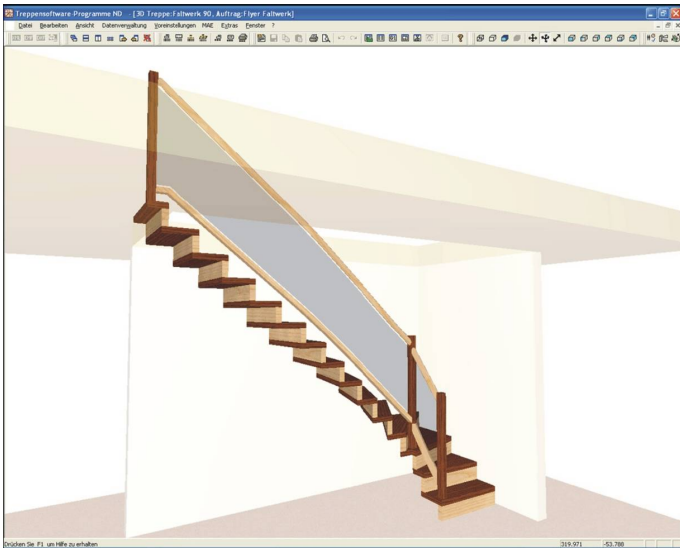


constructing/presenting

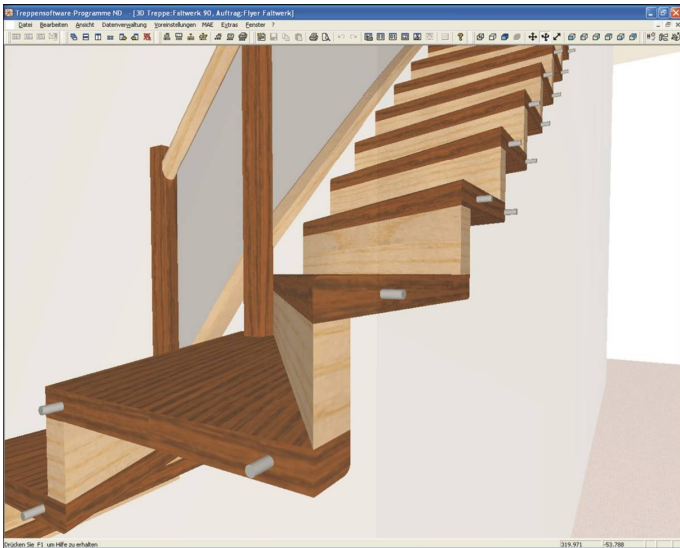
Article no. 00133101,
00312602, 00312601



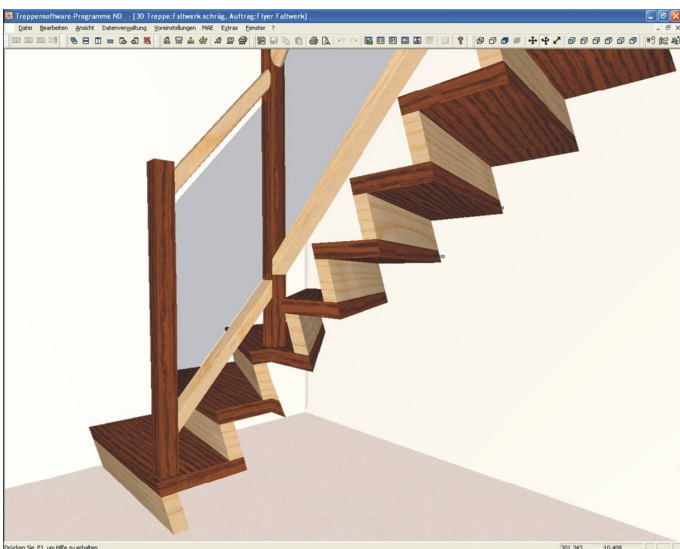
Compass Software



The folded plate staircase offers an excellent possibility to combine the warm wood with the clarity of steel and glass to a modern and filigree type of staircase. The software modules for the construction and production of folded plate staircases are the perfect completion of the Staircase-Software Programs ND. Thus, the folded plate basic constructions can be combined with all possible banister variations. Furthermore, there are no restrictions in the ground plan layout.



The folded plate staircase is a self-supporting construction without stringers. This means that the joint between the treads and the risers must be very solid from a static point of view. In addition, this staircase must generally be fixed to the wall which is made by horizontal wall bolts in most cases. Due to these preconditions, there is a high number of joining elements and consequently also of processing steps for treads and risers.



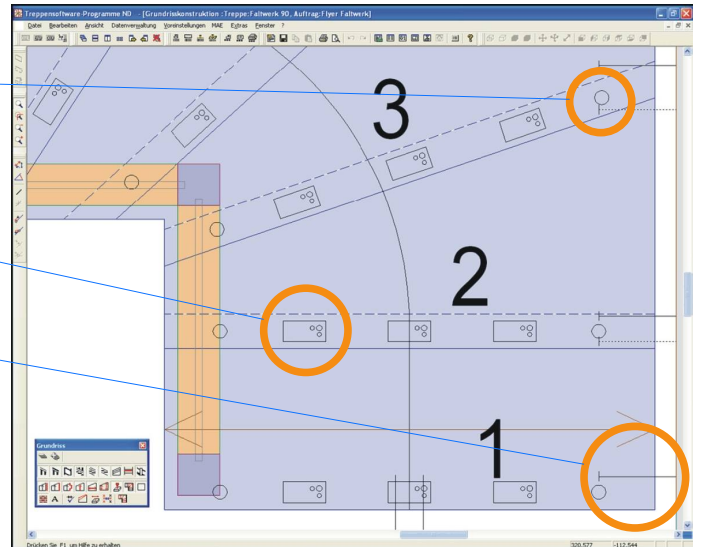
The processing is even more complex if the risers don't have a 90°-angle to the treads. In this case, all tread and riser edges of a turned staircase are beveled. A complete processing on a CNC-machine is only possible with 5 axes.

Folded plate staircase

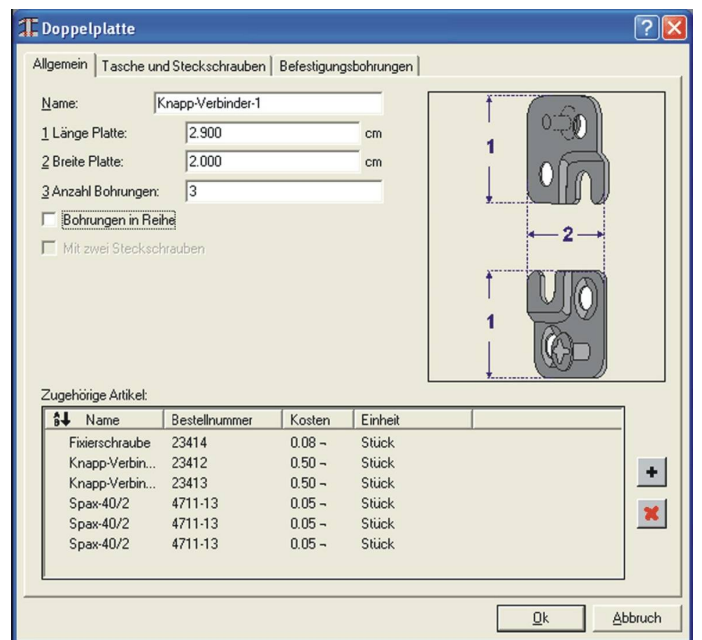
Screw joints which run vertical through the riser from above or from the bottom.

Special joint between the upper tread and the riser or the lower tread and the riser.

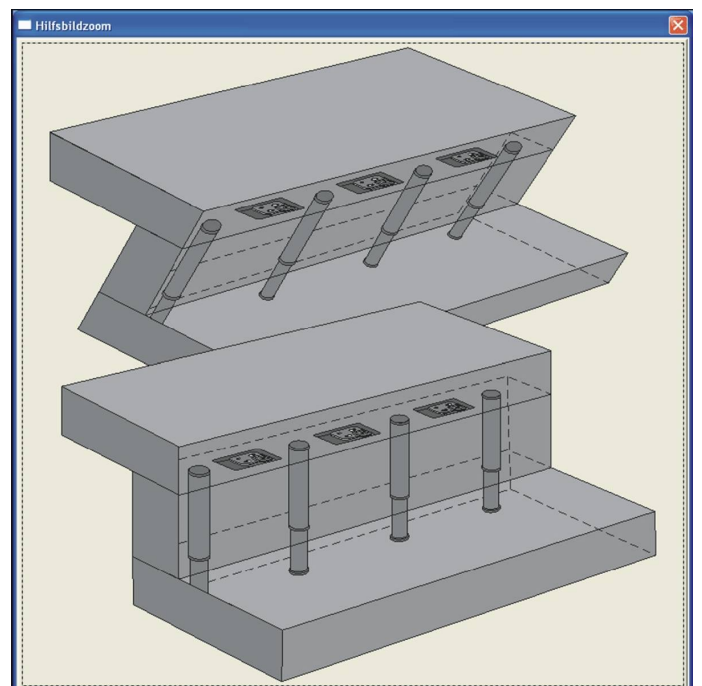
Wall bolts for fixing the staircase.



All joining elements between the treads and the risers (but also between all other elements) i.e. screws, bolts or more complex fittings can be defined in the list of fittings in the SSP ND and can be stored true to size. Additionally, a kind of article list can be stored for each fitting. These lists are then summed up and listed in a parts list for all used fittings.



In the drilling-pattern tree, the individual fittings can then be combined to complex drilling pattern which are automatically positioned in the staircase construction. All drillings for the different fittings have a correspondent in the CNC-processing so that executable CNC-programs can be automatically generated from the construction. This works with 4-axes (only 90°-construction of treads and risers) as well as with 5-axes machines.



Article no. 00133101

Option CAD folded plate staircase with risers 90° or beveled

Precondition:

CAD SSP ND (Article 00119301, 00119401 or 00119501)

Article no. 00312602

Option CAM/CNC folded plate staircase / 4-axes

Folded plate staircase with riser 90°

Usable for 4- and 5-axes machines

Including the option CAD folded plate staircase (Article 00133101)

Precondition:

CAM/CNC 4-axes (Article 00312001) or

CAM/CNC 5-axes (Article 00313001)

CAD SSP ND (Article 00119301, 00119401 or 00119501)

Article no. 00312601

Option CAM/CNC folded plate staircase / 5-axes

Folded plate staircase with riser 90° or beveled

Usable for 5-axes machines

Including the option CAD folded plate staircase (Article 00133101)

and CAM / CNC Z-riser 5-axes (Article 00312801)

Precondition:

CAM/CNC 5-axes (Article 00313001)

CAD SSP ND (Article 00119301, 00119401 or 00119501)

Compass Software GmbH

Steinhammerstr. 140 a

44379 Dortmund

Tel.: +49 (0) 2 31 98 12 90-0

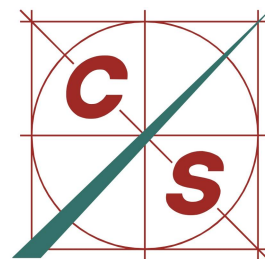
Fax: +49 (0) 2 31 98 12 90-10

Web: www.compass-software.de

Mail: mail@compass-software.de

© Compass Software GmbH 2009

All rights reserved



Compass Software